

Excellence in Medication Safety Ensuring Safety for Our Members

Beth Chester, PharmD, MPH, BCPS, Senior Director, Pharmacy Clinical Operations & Quality, Kaiser Permanente Colorado
Karen Ching, MD, Chief, Pharmaceutical Services, Kaiser Permanente Hawaii
Barbara Kashiwabara, PharmD, Director, Pharmaceutical Services, Kaiser Permanente Hawaii



Agenda

- Overview
- High Risk Medications
- Appropriate Hypertension Medications in Diabetes
- Summary

Overview – Kaiser Permanente

- America's leading not-for-profit integrated health plan
 - Focused on the health & well-being of our members & the communities we serve
- Serving >8.6 million people in nine states and the District of Columbia
 - California, Colorado, Georgia, Hawaii, Maryland, Ohio, Oregon, Virginia, and Washington
 - More than 180,000 employees and physicians
- Practicing evidence-based medicine, advocating prevention as well as treatment

Overview – Pharmacy Services

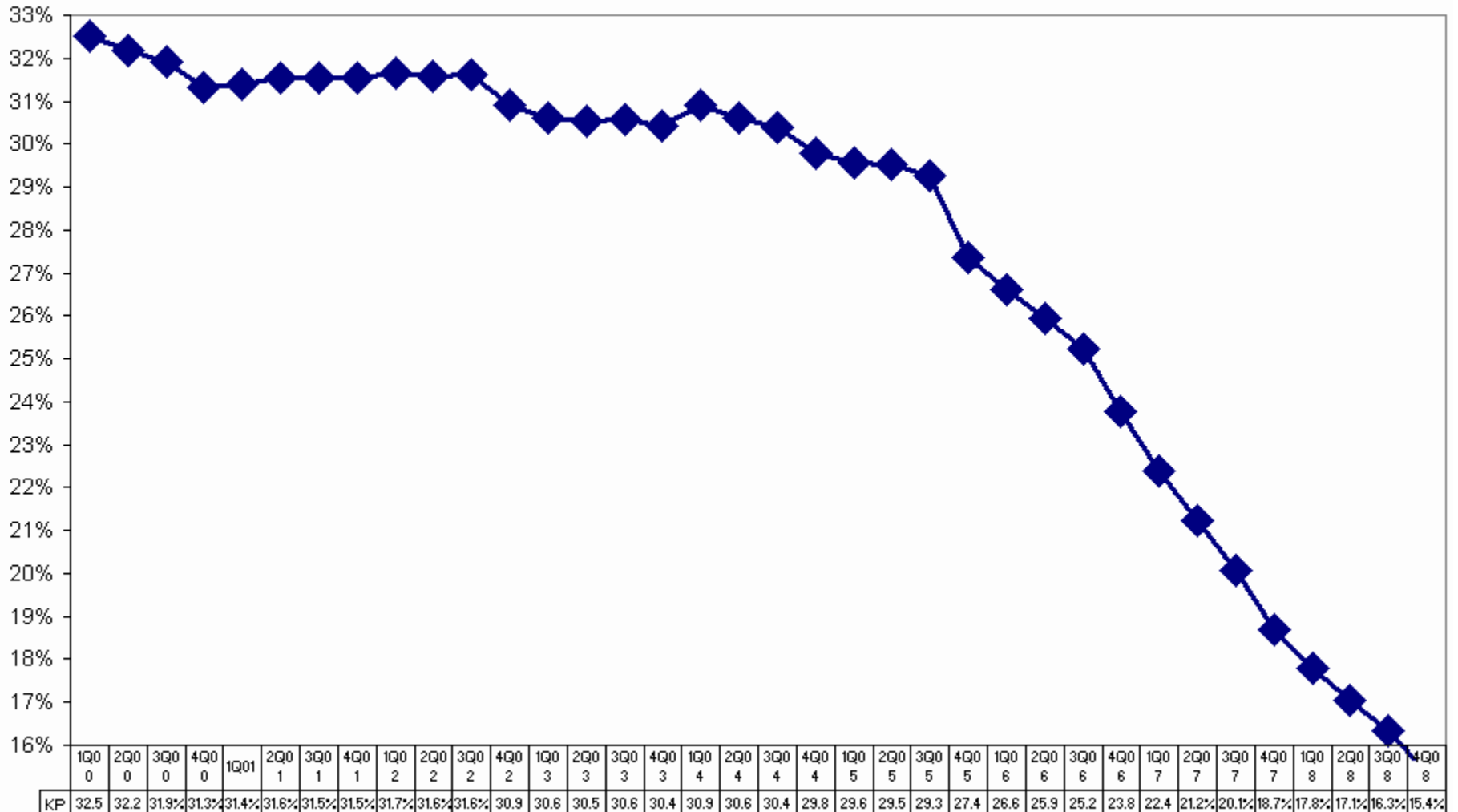
- Our MISSION is to improve the health of our members and the communities we serve, by assuring the safe and effective use of medications. We do this in an environment of service excellence through collaborative patient care, education, responsible innovation, and applied research.
- We fill >130 million prescriptions and provide hundreds of thousands of clinical interventions annually

High Risk Medications in Elderly

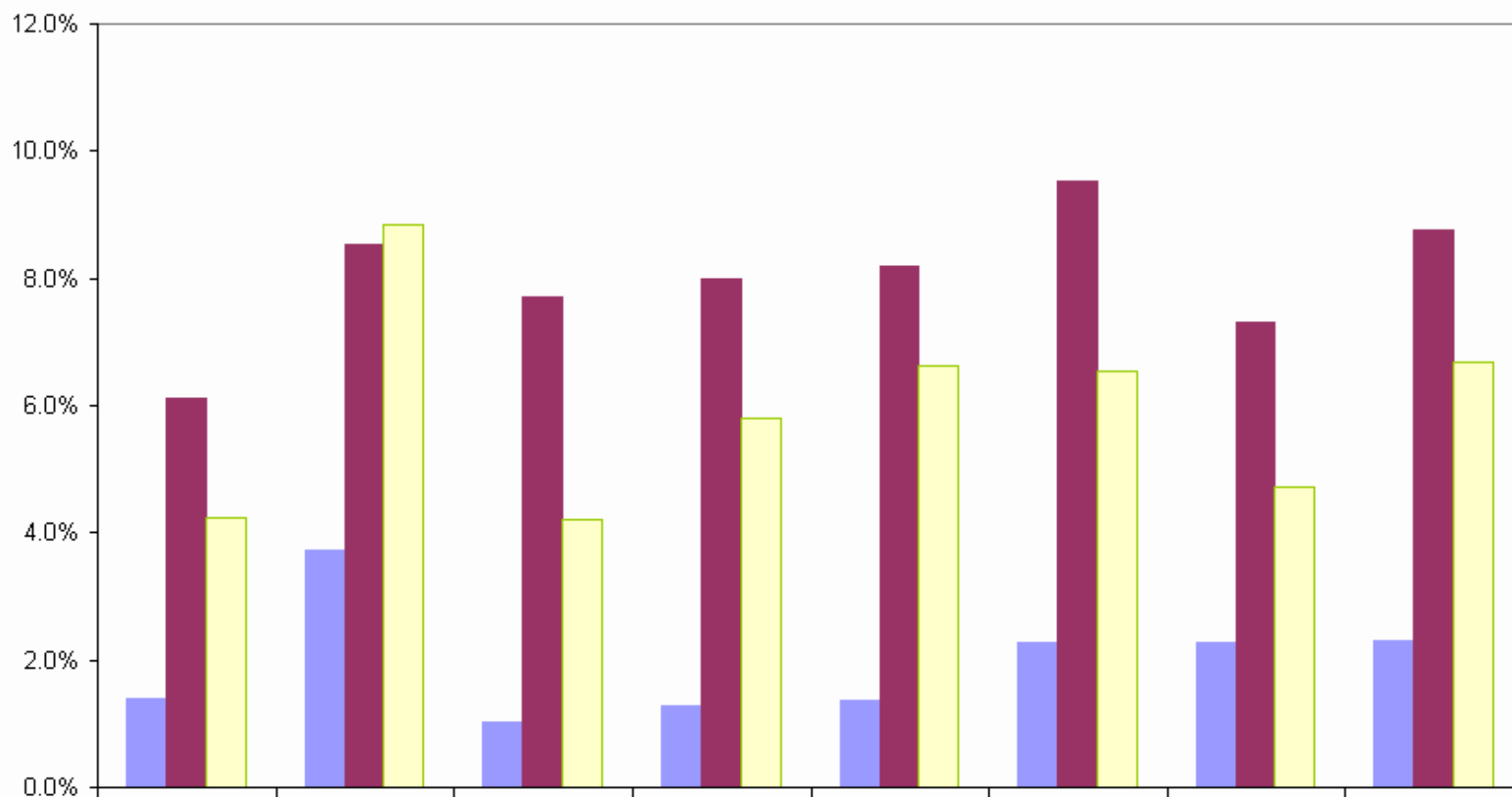
Tactics

- Identification of high risk drugs
- Review evidence for risk, confirm appropriate uses, and identify treatment alternatives
- Review drug utilization to assist prioritization
- Engage key stakeholders & seek agreement
- Develop sustainable processes to support clinical interventions & appropriate use
 - Decision support at point of prescribing & dispensing, formulary management strategies, education
- Key roles in pharmacy
 - Clinical Pharmacy Specialists
 - Clinical Pharmacists
 - Outpatient Pharmacists
 - Formulary Management
 - Informatics
- What gets measured gets done
 - Identify metrics, goals, timelines
 - Establish monitoring & reporting processes
 - Set individual & team accountabilities

Percentage of older KP members with any high-risk medication dispensing, 1Q2000-4Q2008

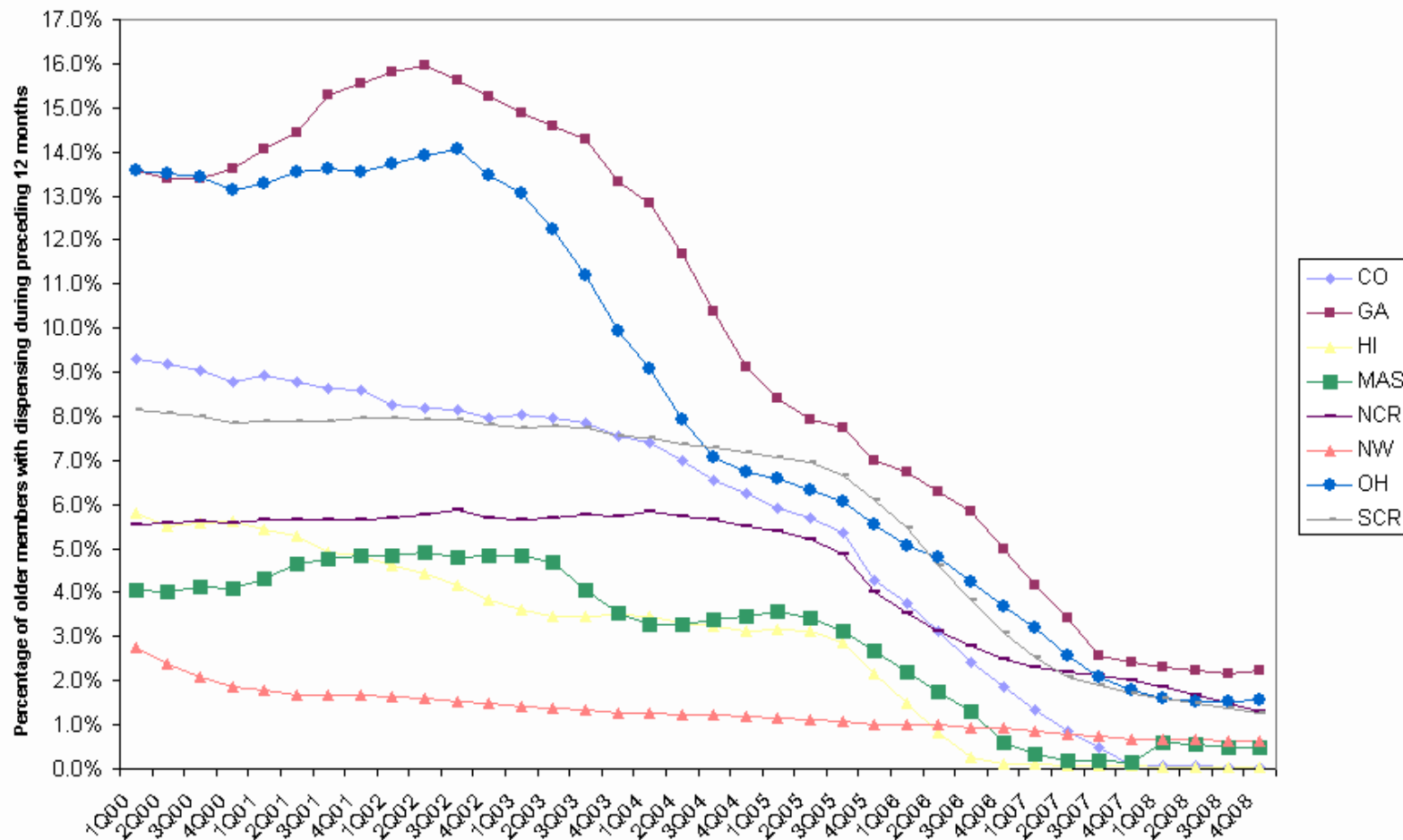


Percentage of older KP members with dispensing of high-risk medications, by stratification category, 4Q2008



Always Avoid	1.4%	3.7%	1.0%	1.3%	1.4%	2.3%	2.3%	2.3%
Rarely Appropriate	6.1%	8.5%	7.7%	8.0%	8.2%	9.5%	7.3%	8.8%
Some Indications	4.2%	8.8%	4.2%	5.8%	6.6%	6.5%	4.7%	6.7%

Propoxyphene Utilization among Older Members by Region



Preferred Antihypertensives in Patients with Diabetes

- *Tactics*
- Develop & promote evidence-based treatment guidelines
- Leverage use of successful chronic disease & population management programs
 - Clinical pharmacy specialists using physician-approved & directed protocols (*aka collaborative drug therapy management*)
- What gets measured gets done
 - Identify metrics, goals, timelines
 - Establish monitoring & reporting process
 - Set individual & team accountabilities

Evidence-based Clinical Guidelines for the Management of Hypertension for Patients with Diabetes

The screenshot shows a Microsoft Internet Explorer browser window displaying the Kaiser Permanente Clinical Library website. The address bar shows the URL: http://cl.kp.org/portal/site/HI/AdultCare/template.FRAME?DOCID=2a0c1e74db366ce426c026c013c621ca&jaxax.portlet.tpst=8206401a7d614e3e77aa642daa8006a0&jaxax.portlet.pbp_8206401a7d614e3e77aa642daa8006a0=imp%3D6decacc. The page title is "Diabetes - Adult Guideline - National: Clinical Library - Microsoft Internet Explorer".

The website header includes the Kaiser Permanente logo and the text "KAISER PERMANENTE. CLINICAL LIBRARY | Hawaii". A search bar is located in the top right corner. Below the header is a navigation menu with tabs for HOME, ADULT CARE, PEDIATRIC CARE, PATIENT CARE RESOURCES, PATIENT DATA SITES, REFERENCE SHELF, CONTINUING EDUCATION, and MANAGEMENT RESOURCES. The current page is "ADULT CARE: ENDOCRINE > CLINICAL GUIDELINES > DIABETES".

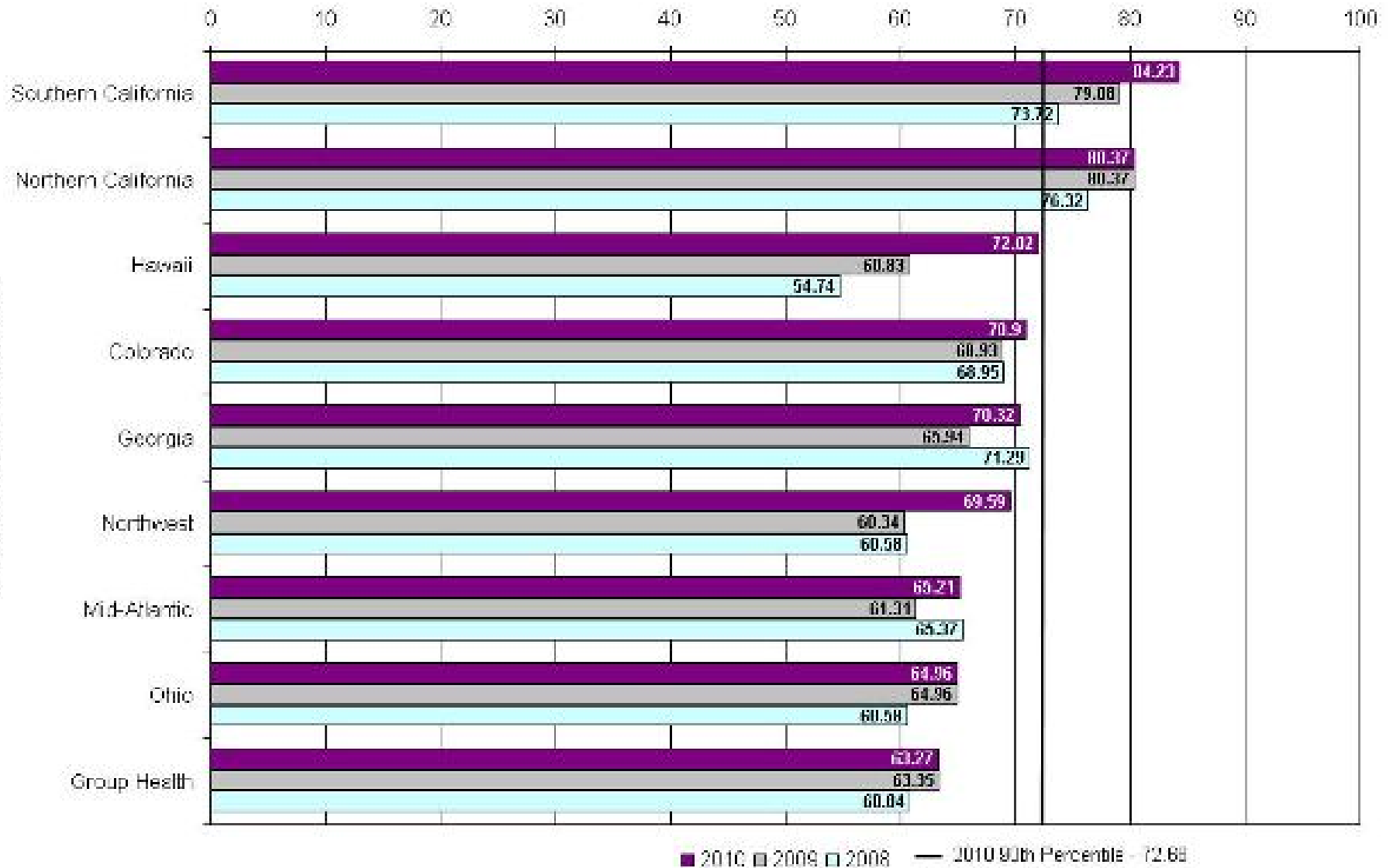
The main content area is titled "MANAGEMENT OF HYPERTENSION Target Blood Pressure". It contains the following sections and bullet points:

- Table of Contents**
 - HOME
 - Prevention**
 - Intervention to Delay Onset
 - Postpartum Follow-up of Gestational Diabetes (GDM)
 - Screening**
 - Candidates to Screen for Type 2 Diabetes
 - Postpartum Screening in Women with GDM
 - Test to Screen for Impaired Glucose Control
 - Pharmacological Management**
 - Management of Hypertension
 - Drug Therapy for Microalbuminuria in Normotensive Patients
 - Monitoring of Microalbumin
 - Management of Blood Glucose
 - Lipid Management
- MANAGEMENT OF HYPERTENSION Target Blood Pressure**
 - The target blood pressure for patients with diabetes and hypertension is < 130/80 mmHg.
- Threshold to Initiate Drug Therapy**
 - Initiate antihypertensive drug therapy in patients with diabetes with a systolic blood pressure of ≥ 140 mmHg and/or diastolic ≥ 85 to 90 mmHg.
 - After three months of lifestyle therapy, if systolic BP is 130 to 139 mmHg or diastolic BP is 80 to 89 mmHg, initiate drug therapy.
- Threshold to Initiate Combination Drug Therapy**
 - When BP is ≥ 150 to 160/90 mmHg, initiate therapy with two drugs, either as a separate prescription or in fixed dose combinations.

Note: For patients with diabetes and hypertension, the target blood pressure is < 130/80 mmHg.
- Initial Treatment in the Absence of Microalbuminuria**
 - A thiazide-type diuretic is strongly recommended for the treatment of diabetes and hypertension in the absence of heart failure, known coronary heart disease, or microalbuminuria.

Controlling High Blood Pressure (CBP) - Total

Kaiser Permanente HMO Plans



Summary of Successful Medication Safety Practices



Understand the measure

- Evidence



Engage Key Stakeholders

- Agreements
- Sustainable Process



Measure, R&R

- Goals
- Reward & Recognition



thrive

KAISER PERMANENTE®

Questions?